



MONTHLY MEMBERSHIP PROGRESS REPORT

District 321A2

Results as of: 6/30/2017

GMT: OPEN

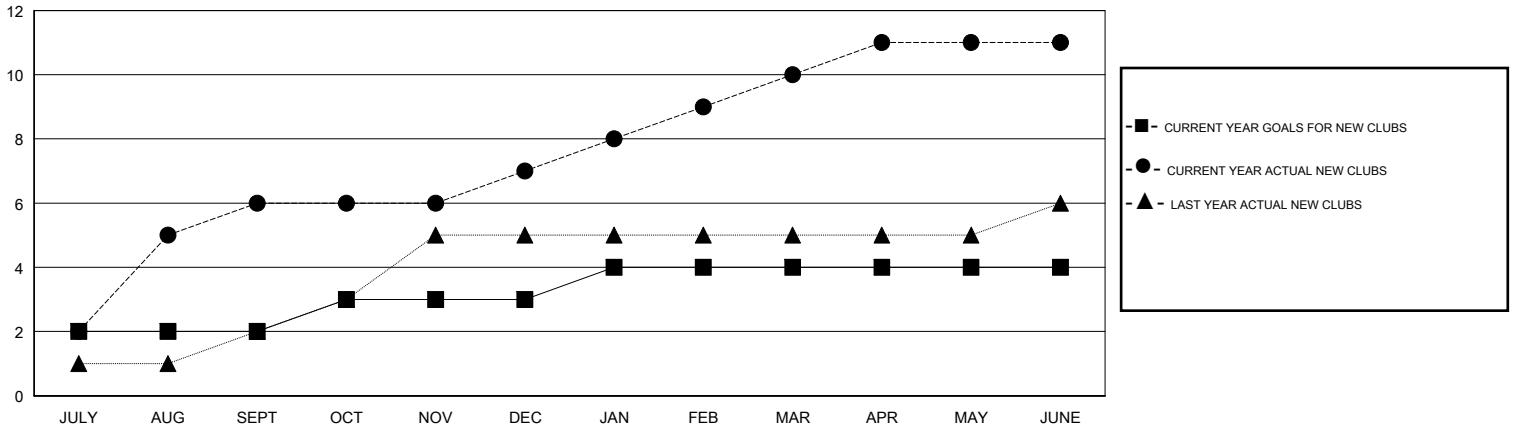
LOCATION INDIA

GMT CA

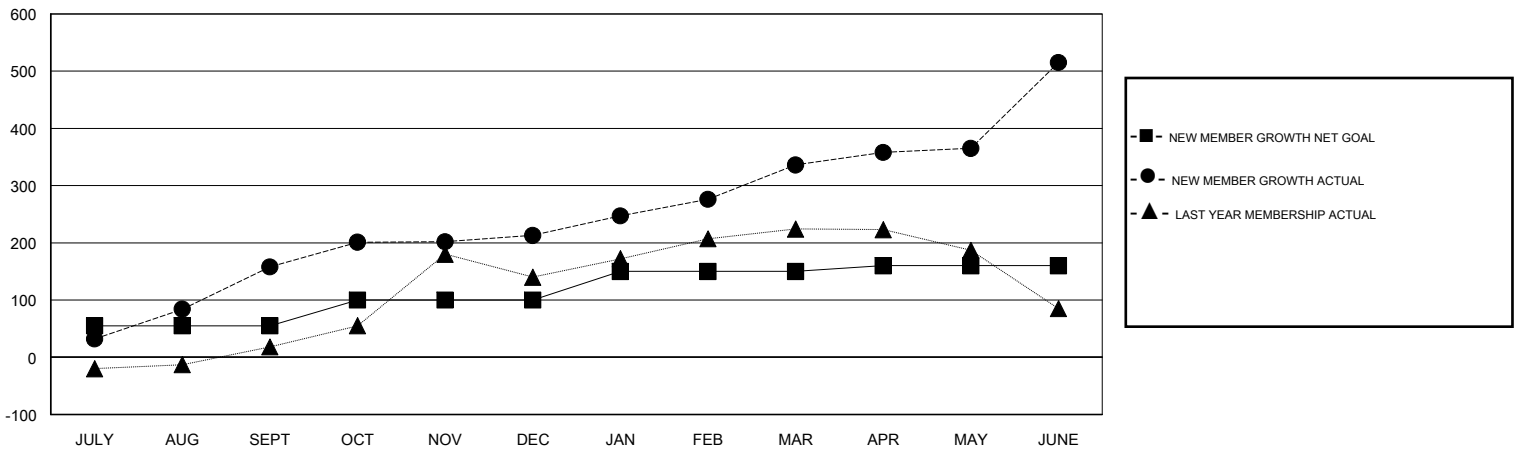
Clubs			
RESULTS FOR 2016-2017			
QUARTER	NEW CLUB GOAL	NEW CLUBS	DROPPED CLUBS
JULY/AUG/SEPT	2	6	0
OCT/NOV/DEC	1	1	0
JAN/FEB/MAR	1	3	0
APR/MAY/JUNE	0	1	0

Members			
RESULTS FOR 2016-2017			
QUARTER	NEW MEMBER GROWTH NET GOAL (not reinstated or transfers)	NEW MEMBER GROWTH ACTUAL (not reinstated or transfers)	DROPPED MEMBERS ACTUAL (including transfers)
JULY/AUG/SEPT	55	287	129
OCT/NOV/DEC	45	122	67
JAN/FEB/MAR	50	153	30
APR/MAY/JUNE	10	360	181

GOALS AND ACTUAL NEW CLUBS CUMULATIVE



GOALS AND ACTUAL MEMBERS CUMULATIVE



DROPPED CLUBS: 0	90 CLUBS OF 101 ADDED 1 OR MORE NEW MEMBERS	<u>GENDER DISTRIBUTION</u>	
DROPPED MEMBERS		MALE	2,342 (70.76%)
DECEASED	3	FEMALE	968 (29.24%)
CLUB CANCELLED	0	TOTAL FAMILY UNIT MEMBERS	1,669
OTHER	404	FAMILY MEMBERS PAYING HALF DUES	927
TOTAL	407		

[CLICK HERE FOR CUMULATIVE MEMBERSHIP DATA](#)